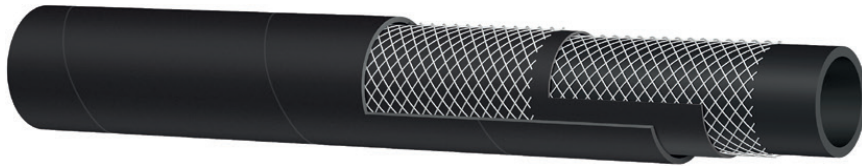


Petrochemical/Oil



654AA EVOLUTION

**Multi-fuel 20 bar (300 psi)
SAE J30R7**

Tube: black conductive NBR.

Reinforcement: high tensile textile cords.

Cover: black conductive CR - abrasion, ozone and hydrocarbon resistant.

Application: fuel and oil delivery.

Also suitable for automotive and marine fuel transfer.

Constant operation: -40 °C +125 °C (-40 °F +257 °F)

| ↔ | | ↔ | | ↕ | | ↕ | | ∠ | | ⌋ | ⌋ | |
|------|-------|-------|------|-----|-----|-----|-----|----|----|---|-------|-------|
| mm | in | mm | in | bar | psi | bar | psi | mm | in | % | kg/m | lb/ft |
| 6,0 | 1/4" | 12,00 | 0,47 | 20 | 300 | 60 | 900 | | | | 0,110 | 0,08 |
| 8,0 | 5/16" | 14,00 | 0,55 | 20 | 300 | 60 | 900 | | | | 0,130 | 0,09 |
| 10,0 | 3/8" | 16,00 | 0,63 | 20 | 300 | 60 | 900 | | | | 0,160 | 0,11 |
| 13,0 | 1/2" | 20,00 | 0,79 | 20 | 300 | 60 | 900 | | | | 0,220 | 0,15 |
| 16,0 | 5/8" | 24,00 | 0,94 | 20 | 300 | 60 | 900 | | | | 0,300 | 0,21 |
| 19,0 | 3/4" | 27,00 | 1,06 | 20 | 300 | 60 | 900 | | | | 0,330 | 0,23 |
| 25,0 | 1" | 34,00 | 1,34 | 20 | 300 | 60 | 900 | | | | 0,220 | 0,15 |

Specifications can be subject to change; data is correct at the time of production. Please contact the sales office for specific enquiries.